

Impact of elasticity on the piezoresponse of adjacent ferroelectric domains investigated by scanning force microscopy

Tobias Jungk,^{a)} Ákos Hoffmann, and Elisabeth Soergel
Institute of Physics, University of Bonn, Wegelerstraße 8, 53115 Bonn, Germany

(Received 10 July 2007; accepted 17 August 2007; published online 16 October 2007)

As a consequence of elasticity, mechanical deformations of crystals occur on a length scale comparable to their thickness. This is exemplified by applying a homogeneous electric field to a multidomain ferroelectric crystal: As one domain is expanding, the adjacent ones are contracting, leading to clamping at the domain boundaries. The piezomechanically driven surface corrugation of micron-sized domain patterns in thick crystals using large-area top electrodes is thus drastically suppressed, barely accessible by means of piezoresponse force microscopy. © 2007 American Institute of Physics. [DOI: 10.1063/1.2795680]

I. INTRODUCTION

Ferroelectric domain patterns are intensively investigated due to their increasing practical importance, e.g., for frequency conversion,¹ electrically controlled optical elements,² photonic crystals,³ or high-density data storage.⁴ For their characterization a visualization technique with high lateral resolution is required. Among a wealth of techniques⁵ piezoresponse force microscopy (PFM) has become a standard tool for visualizing micron-sized domain structures. For PFM a scanning force microscope is operated in contact mode with an alternating voltage applied to the tip. In ferroelectric samples this voltage causes thickness changes via the converse piezoelectric effect⁶ and therefore vibrations of the surface which lead to oscillations of the cantilever that can be read out with a lock-in amplifier.^{7,8} Quantitative analysis of PFM images is complicated by the strongly inhomogeneous electric field generated by the tip.⁹ A possibility to overcome this difficulty consists in the application of large-area electrodes on the sample surfaces, thereby generating a plane plate capacitor-like electric field configuration inside the sample.

PFM with large-area top electrodes has been realized on piezoceramic thin films.^{10–12} The lateral resolution was not observed to be affected by this electrode configuration. This is plausible as mechanical coupling between adjacent grains in ceramics can be assumed to be weak. Therefore they can deform independently according to their crystallographic orientation and thus their piezoelectric tensor elements. Indeed, there is no report so far on PFM measurements of differently orientated domains within a single grain covered by a metal layer. This, however, corresponds to the situation of a metallized multidomain single crystal.

Unfortunately, there is no analytical solution to the problem of crystal deformation at a domain boundary in a homogeneous electric field taking clamping into account. However, it can be estimated from elasticity theory¹³ and from finite element calculations¹⁴ that clamping affects the surface distortion on a length scale on the same order of magnitude

as the thickness of the crystal. This is exemplified in Fig. 1 where the deformation of a bidomain crystal of thickness t in a homogeneous electric field is shown schematically.

In this contribution we investigate the impact of elasticity on the surface corrugation of multidomain samples. Due to their wide applicability we used lithium niobate (LiNbO₃) crystals exhibiting 180° domains only. The width of the domain walls is expected to be a few unit cells;¹⁵ from high-resolution electron microscopy images they are known to be narrower than 3 nm.¹⁶ When imaging domain walls with PFM, however, they appear to be wider due to the limited resolution of PFM, typically in the order of 50 nm.¹⁷

II. EXPERIMENTAL PROCEDURE

For the investigations we used a commercial scanning force microscope (SMENA, NT-MDT), modified to allow the application of voltages to the tip (10 V_{pp}, ~30 kHz). All PFM images were recorded from the X-output of a dual-phase lock-in amplifier (SRS 830), thus being unaffected by the background inherent to PFM measurements.¹⁸ The experiments were carried out with z-cut LiNbO₃ crystals (thicknesses: 500 and 80 μm). The crystals either had one domain boundary or they were periodically poled [periodically poled lithium niobate (PPLN)]. We partly metallized the samples with gold (Au) or copper (Cu) layers of 30–50 nm thickness; one sample was covered with a Cu layer of 6 nm thickness only. Structured metal layers were fabricated using electron microscopy grids as masks for the evaporation. All samples were grounded at the back side by a

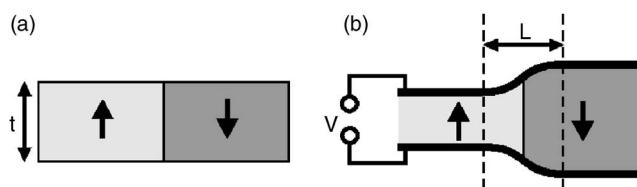


FIG. 1. (a) Bidomain crystal of thickness t and its deformation (b) taking place on the length scale L when applying a homogeneous electric field to it. Note that the width of the domain wall itself is not affected by the deformation of the crystal.

^{a)}Electronic mail: jungk@uni-bonn.de

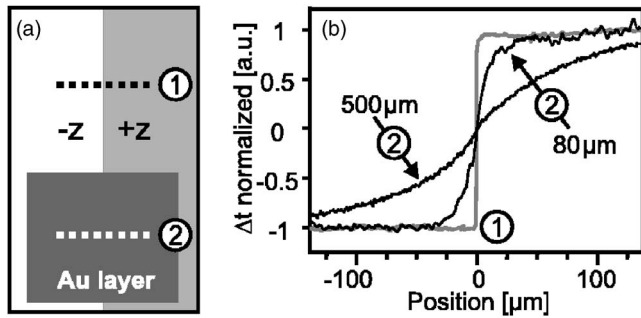


FIG. 2. (a) Diagram of the LiNbO_3 samples used to determine the surface distortion across the domain boundary with and without an additional Au layer. (b) Line scans recorded at the positions indicated in (a) perpendicular to the domain boundary for two samples of 500 and 80 μm thicknesses. At the uncoated area the line scans ① coincide for both crystals. Δt : normalized surface deformation of the sample.

homogenous metal electrode and mounted on a piezomechanically driven translation stage with a travel range of 300 μm .

We used cantilevers from MikroMasch, some of them conductively coated with Ti–Pt. To determine the quality of the electrical connection between tip and metal layer, we applied an alternating voltage to the tip and recorded the voltage at the layer via lock-in amplification while scanning the sample. The obtained images show the connectivity between tip and metal layer. For the uncoated, highly n-doped silicon tips, no electrical connection was found (most probably because of a naturally growing oxide layer of some nanometer thickness¹⁹). However, also for Ti–Pt coated tips, electrical contact for both the Au and the Cu layers was not reliable. This may be caused by the extremely small contact area. Hence, if the application of voltages to the metal layer was desired, we directly connected the voltage source with an extra wire.

III. EXPERIMENTAL RESULTS

A. Clamping at a single domain wall

To demonstrate the effect of clamping between adjacent 180° domains, we partly metallized two bidomain crystals of thicknesses of 500 and 80 μm with a 50 nm Au layer on an area of several mm^2 [Fig. 2(a)]. Then we measured the length of the deformation of the surface across the domain boundary with (2) and without (1) the Au layer. In Fig. 2(b) line scans of 260 μm length at the positions indicated in (a) are shown. For better comparability the line scans are normalized to the same maximum crystal deformation. As the full deformation for the 500 nm thick sample was not achieved within the scan range, we measured the crystal response some millimeters away from the domain boundary and fitted the line scan with a modified hyperbolic tangent to estimate the width of the surface deformation.¹⁷ Independent of the thickness of the sample, the surface distortion for both crystals using standard PFM (with the tip acting as electrode) show the same steplike profile (1). On the metallized region, however, the deformation of the crystal reaches its maximum at distances of $\sim 300 \mu\text{m}$ away from the domain boundary for the 500 μm thick crystal and at $\sim 35 \mu\text{m}$ for the 80 μm

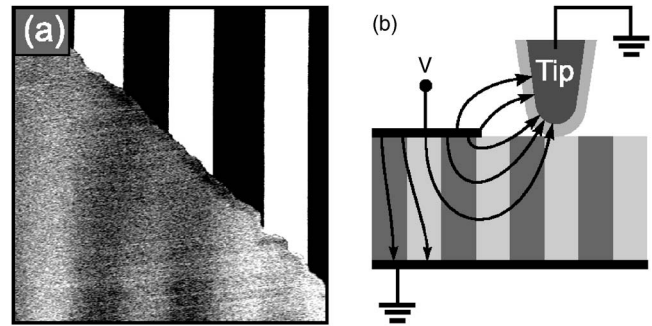


FIG. 3. (a) PFM image of PPLN partially covered with a conducting (30 nm thick) Cu layer. The alternating voltage was applied to the Cu layer, the tip, and the back-electrode being grounded (b). The contrast in (a) is enhanced to reveal the surface corrugation under the electrode of $\sim 2 \text{ pm}$ amplitude. The image size is $25 \times 25 \mu\text{m}^2$.

thick crystal, respectively. The surface deformation across the domain boundary is thus of the same order of magnitude as the thicknesses of the crystals. This is what can be expected from elasticity theory due to clamping between adjacent domains.¹³

B. Impact of clamping on PFM imaging

To investigate the impact of clamping on the surface corrugation of multidomain crystals, we partly metallized a 500 μm thick PPLN crystal (period $\Lambda = 8 \mu\text{m}$) with a 30 nm thick Cu layer. Figure 3 shows a recorded PFM image with the corresponding sample configuration and electrical connection scheme. To avoid a short circuit between the grounded tip and the Cu layer, we used a uncoated silicon tip, exhibiting a few nanometer thick insulating oxide layer. The PFM measurements [Fig. 3(a)] revealed a piezomechanically driven surface deformation of 140 pm in the non-metallized part of the sample. However, underneath the Cu layer the surface corrugation was measured to be $< 2 \text{ pm}$. The latter result can be compared to the slope of the line scan for the 500 μm thick crystal in Fig. 2(b), which was found to be $\sim 0.4 \text{ pm}/\mu\text{m}$ at the domain boundary. The distance between neighboring domain boundaries in this PPLN crystal is 4 μm . Therefore a surface corrugation of $\sim 1.6 \text{ pm}$ is expected, which matches fairly well the measured data. This result is consistent with the assumption that the surface corrugation is reduced by a factor of $\Lambda/2t$ for periodically clamped samples, with t being the thickness of the sample.²⁰ The shape of the surface grating in the homogeneous electric field was found to be sinusoidal.

Furthermore, it is striking that the contrast in the two parts of the image is inverted. This becomes evident, however, when looking at the direction of the electric field inside the crystal [Fig. 3(b)]. Analyzing carefully the image, it can also be observed that near the edge of the Cu layer the contrast is reduced even more. This can be explained as follows: When the tip is at the edge of the layer, the crystal is not only clamped because of the PPLN structure underneath but in addition the uncoated part of the crystal remains undeformed because of the absence of the electrical field.

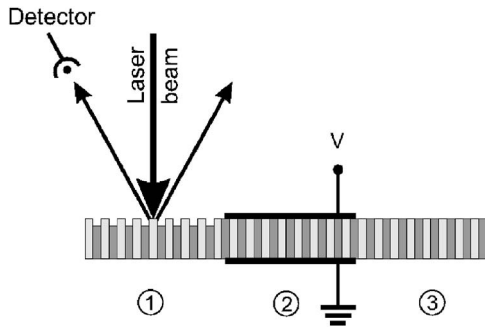


FIG. 4. Schematics of the PPLN sample used for the optical diffraction experiments. In section ① a distinct surface-relief grating was obtained by etching with hydrofluoric acid, in the central section ② Au electrodes allow the application of up to 1 kV to the sample, and section ③ remained unchanged to perform the experiments with liquid electrodes.

C. Optical diffraction experiments

To sustain these results and to exclude possible artifacts in the PFM measurements, we performed optical diffraction experiments^{20,21} with the surface-relief grating. Therefore an identical PPLN sample ($\Lambda=8\ \mu\text{m}$, thickness of $500\ \mu\text{m}$) was prepared as follows (Fig. 4): One part of the sample was etched with hydrofluoric acid to reveal the domain structure as a distinct surface-relief grating (1), one part of the sample was covered with a 50 nm thick Au electrodes (2), and the rest of the sample remained unchanged (3).

In a first step the exact readout angle for the diffraction was determined with the etched part of the sample. Then the sample was moved with a translation stage in order to irradiate the part covered with the Au electrodes. Although applying 1 kV to them, we could not observe any diffracted laser beam. We repeated the experiment with the sample mounted in a special holder with liquid electrodes,²² applying 10 kV to it. In this setup the unmodified part of the sample was investigated, thereby excluding any mechanical restriction of the Au layer. However, also in this case no diffraction from the piezomechanically induced surface-relief grating was observed. According to the piezoelectric coefficient $d_{33}=8.1\ \text{pm/V}$ (Ref. 23) without considering clamping, a surface corrugation of $\sim 80\ \text{nm}$ should emerge when applying 10 kV to the crystal, easily detectable by optical means. We attribute the missing diffraction to the extremely smoothed surface-relief grating caused by clamping. This is in agreement with the results from our PFM measurements, performed with a PPLN crystal with same period Λ : Clamping reduces the piezomechanically driven surface corrugation by a factor of ~ 70 . Therefore, although applying 10 kV to the crystal, the expected surface modulation is only $\sim 1\ \text{nm}$. The detection of such small surface corrugations, however, requires a more sophisticated setup²⁰ and is beyond the scope of our experimental setup.

D. Influence of metallic islands on PFM imaging

Finally, we want to underline the importance of a reliable electrical connection to the metal layer. Thus, we performed a series of experiments avoiding any connection deliberately. In this situation the metallization acts like a shield, and therefore no electric field penetrates into the crystal.

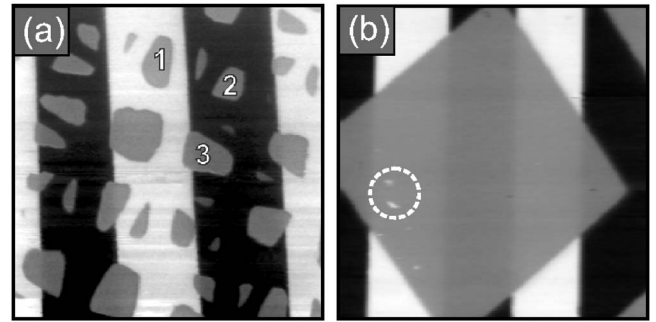


FIG. 5. Effect of isolated metal layers on PFM imaging. (a) PPLN crystal covered with Cu islands (40 nm thickness). The size of the islands varies from 2 to $70\ \mu\text{m}^2$. Some of them are located on a positive (1) or on a negative domain face only (2) and some lie across a domain boundary (3). The image size is $50\times 50\ \mu\text{m}^2$. (b) PFM image of a PPLN crystal partly covered with a 6 nm thick Cu layer. Inside the circle the Cu layer has defects. The image size is $60\times 60\ \mu\text{m}^2$, the full z range of the images is 140 pm.

Consequently no PFM signal at all can be detected under the electrode. This is shown in Fig. 5(a) where 40 nm thick micrometer-sized Cu islands have been deposited on top of a PPLN crystal. Some of the islands are placed at one domain face only (1 and 2), whereas others lie across a domain boundary (3). Independent on their position relative to domain boundaries, no contrast can be detected under the metallic islands. The missing contrast has nothing to do with a size effect of the electrode and therefore a changed field distribution inside the crystal.⁹ Note that the PFM signal from the islands is the exact median of the two PFM signals from the $+z$ and the $-z$ domain faces. This is consistent with the system-inherent background described previously.⁷

To give further evidence that the missing contrast at the Cu islands in Fig. 5(a) is due to a shielding mechanism, we evaporated a very thin Cu layer (6 nm) on top of a PPLN crystal. Such thin metal layers are known to be not fully conducting.²⁴ Thus, the shielding by the metal layer is not perfect anymore, that is why we observed a faint contrast of the domain pattern underneath the Cu layer [Fig. 5(b)]. In comparison to the gratings generated in a homogeneous electric field, this grating shows a pronounced steplike profile and its amplitude is roughly 7% of the amplitude measured at the uncoated area. Note that at some positions, e.g., the ones indicated with the circle in Fig. 5(b), the Cu layer is damaged and therefore the full PFM signal can be observed.

IV. CONCLUSIONS

We have investigated the consequences of elasticity on the clamping between adjacent ferroelectric domains. Thereby we could confirm theoretical predictions on the length scale clamping affects the surface deformation and its dependence on the thickness of the crystal. The effects being too small to be detected by optical means, we used piezoresponse force microscopy (PFM) capable of measuring deformations of only a few picometers. The obtained results have also a direct impact for the technique of PFM itself, quantifying the drawback for the resolution using a top metal layer when investigating multidomain crystals.

ACKNOWLEDGMENTS

We thank Michael Kösters for the optical measurements and the poling of the bidomain samples. Many thanks also to Boris Sturman for helpful discussions. Financial support of the DFG research unit 557 and of the Deutsche Telekom AG is gratefully acknowledged.

- ¹M. M. Fejer, G. A. Magel, D. H. Jundt, and R. L. Byer, *IEEE J. Quantum Electron.* **28**, 2631 (1992).
- ²R. W. Eason, A. S. Boyland, S. Mailis, and P. G. R. Smith, *Opt. Commun.* **197**, 201 (2001).
- ³N. G. R. Broderick, G. W. Ross, H. L. Offerhaus, D. J. Richardson, and D. C. Hanna, *Phys. Rev. Lett.* **84**, 4345 (2000).
- ⁴Y. Cho, S. Hashimoto, N. Odagawa, K. Tanaka, and Y. Hiranaga, *Appl. Phys. Lett.* **87**, 232907 (2005).
- ⁵E. Soergel, *Appl. Phys. B: Lasers Opt.* **81**, 729 (2005).
- ⁶R. E. Newnham, *Properties of Materials* (Oxford University Press, New York, 2005).
- ⁷T. Jungk, Á. Hoffmann, and E. Soergel, *Appl. Phys. Lett.* **89**, 163507 (2006).
- ⁸*Nanoscale Characterisation of Ferroelectric Materials*, edited by M. Alexe and A. Gruverman, 1st ed. (Springer, Berlin, 2004).
- ⁹T. Jungk, Á. Hoffmann, and E. Soergel, *Appl. Phys. A: Mater. Sci. Process.* **86**, 353 (2007).
- ¹⁰O. Auciello, A. Gruverman, and H. Tokumoto, *Integr. Ferroelectr.* **15**, 107 (1997).
- ¹¹A. Gruverman, O. Auciello, and H. Tokumoto, *Annu. Rev. Mater. Sci.* **28**, 101 (1998).
- ¹²A. Gruverman, B. J. Rodriguez, A. I. Kingon, R. J. Nemanich, J. S. Cross, and M. Tsukada, *Appl. Phys. Lett.* **82**, 3071 (2003).
- ¹³S. P. Timoshenko and J. M. Goodier, *Theory of Elasticity*, 3rd ed. (McGraw-Hill, New York, 1970).
- ¹⁴T. Jach, S. Kim, V. Gopalan, S. Durbin, and D. Bright, *Phys. Rev. B* **69**, 064113 (2004).
- ¹⁵B. Meyer and D. Vanderbilt, *Phys. Rev. B* **65**, 104111 (2002).
- ¹⁶M. Foeth, A. Sfera, P. Stadelmann, and P.-A. Buffat, *J. Electron Microsc.* **48**, 717 (1999).
- ¹⁷T. Jungk, Á. Hoffmann, and E. Soergel, e-print arXiv:cond-mat/0703793.
- ¹⁸T. Jungk, Á. Hoffmann, and E. Soergel, *J. Microsc.-Oxford* **227**, 76 (2007).
- ¹⁹S. M. Sze, *Semiconductor Devices*, 2nd ed. (Wiley, New York, 2002).
- ²⁰S. Stepanov, N. Korneev, A. Gerwens, and K. Buse, *Appl. Phys. Lett.* **72**, 879 (1998).
- ²¹J. Capmany, C. R. Fernández-Pousa, E. Diéguez, and V. Bermúdez, *Appl. Phys. Lett.* **83**, 5145 (1998).
- ²²M. Müller, E. Soergel, and K. Buse, *Appl. Phys. Lett.* **83**, 1824 (2003).
- ²³M. Jazbinšek and M. Zgonic, *Appl. Phys. B: Lasers Opt.* **74**, 407 (2002).
- ²⁴U. Jacob, J. Vancea, and H. Hoffmann, *Phys. Rev. B* **41**, 11852 (1990).